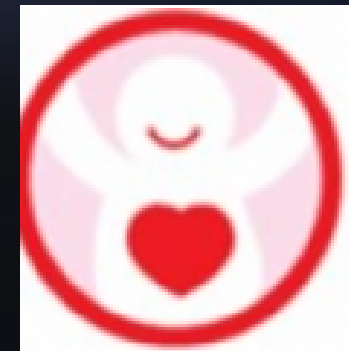
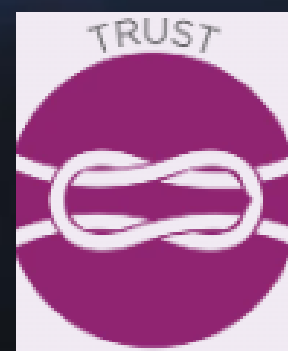
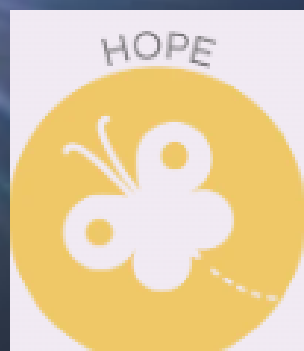


## Our School Vision

At St Stephen's CE Primary School, our Christian values run through our school like a golden thread and enable our children to flourish and ASPIRE in life. Our Christian vision: *'for with God, nothing is impossible'* ( Luke 1 : 37), helps support and guide our whole school community in striving to beat our previous best endeavours. Throughout the year, we re-focus on a Christian Value in order to keep God in the centre of our lives.



**Luke 1:37 "For with GOD nothing shall be impossible"**

**#ASPIRE**

# ASPIRE Curriculum - Key Principles:

**A** whole school curriculum with high expectations and excellence delivered rigorously through well sequenced subjects, progression in generative knowledge, rich vocabulary, concepts and skills,

**S**timulating enquiring minds by providing rich and relevant experiences, purposeful and connected learning, and creative thinking

**P**lacing nurturing, lifelong learning behaviours – resilience, risk taking, independence, perseverance, and pride in success - at the heart of our curriculum

**I**nclusivity and flexibility which allows us to cater for individual needs, abilities and interests

**R**evisiting key knowledge, skills and vocab, so pupils know more and remember more

**E**ncompassing the Whole Child – developing their faith, values, spirituality, health and well-being, and understanding of the world we live in, their future role in our culturally diverse community and country where equality and tolerance is promoted

**Luke 1:37 "For with GOD nothing shall be impossible"**

**#ASPIRE**



# Who are the key people you will need to know?

**Mr Lovgreen**  
**Headteacher**  
**DSL**

**Miss Doan**  
**Deputy Headteacher**  
**And DDSL**

**Mrs Hadfield**  
**Class Teacher**

**Miss McCrindle**  
**SEND CO**

**Miss Cowley**  
**Teaching Assistant**

**Miss Costin**  
**Pastoral**

**Luke 1:37 "For with GOD nothing shall be impossible"**

**#ASPIRE**



# Behaviour Expectations

St Stephen's CE Primary school we expect that children can :

1. Always do their best and take pride in their work
2. Be respectful of others and school property
3. Follow instructions and always be honest
4. Walk around school and behave in a safe way
4. Keep their hands and feet to themselves and handle their feelings positively
5. Use friendly language and call people by their chosen name
6. Only bring to school what they need
7. Be in the right place at the right time
8. Have excellent manners and always be kind
9. Listen when others are speaking



**Luke 1:37 "For with GOD nothing shall be impossible"**

**#ASPIRE**



# Administration Key Information

- We are here to help!
- Attendance – Reporting absences / Illnesses / Appointments
- Attendance Letters / EWO: 95% Pupil Premium and 90% all other children
  - Holiday Requests / Absences (Absence Request Form)
- Referral to Local Authority for Holiday Education Penalty Notice (HEPN)
- Authorised absences may include – Bereavement / Funerals, Parental Weddings, Religious Observations





# Start and End of the Day

- Main gates on the front open not before 8.30am
  - Classroom doors open at 8.45am
  - Registration closes 8.55am
- End of the day, main gates open not before 3.05pm
  - Children finish at 3.15pm

Please note:

- Bikes and scooters need to be dismounted at the main gate then walked to the shelter
  - Children **must** walk to their classroom



# Collection from School

- Please inform the office or class teacher if there is a change of collection arrangement
- Children over 10 years old can be collected by an older sibling in Year 10 or above



Luke 1:37 "For with GOD nothing shall be impossible"

#ASPIRE

# Uniform

- Royal blue crew neck sweatshirt, school fleece or cardigan
    - Yellow polo shirt
  - Dark grey trousers, skirt or pinafore dress
    - Yellow of blue gingham summer dress
  - Black / grey / white socks or grey tights
    - Black school shoes or boots
  - No make up, including nail varnish
  - One small pair of stud earrings (plain in colour and design). These **must** be removed for PE
- [https://www.stitchdesign.co.uk/uniform/St\\_Stephens\\_CE\\_Primary\\_School\\_M34\\_5HD](https://www.stitchdesign.co.uk/uniform/St_Stephens_CE_Primary_School_M34_5HD)





# PE Kit



- White t-shirt
- Black shorts or leggings
- Trainers
- A tracksuit for when children do PE outside in colder weather
- Hair **must** be tied back

Please note:

- It is NOT compulsory to wear items with the school logo
- LABEL EVERYTHING!!!!!!!!!!!!!!!!!!!!

# School Dinners

- Your child is entitled to the universal free school meals
  - There are always 3 meals to choose from, which always include at least 2 vegetarian options
- If you would prefer to send your child a packed lunch, this needs to be healthy and balanced
- School dinners menus are on the school website
  - **No nuts or nut based food**



Luke 1:37 "For with GOD nothing shall be impossible"

#ASPIRE



# Parent Involvement

- Phonics Workshops
- Reading and Writing Workshops
  - Visit to Ashton Library
  - Visit to Guide Bridge Theatre
- Trip to Smithills Farm (Summer 2)
- Grandparent's Decoration Day
  - Seasonal Walks
  - Street Treats
  - Postbox Walk
  - School Fair



Luke 1:37 "For with GOD nothing shall be impossible"

#ASPIRE



# Early Birds and Night Owls

- Early Birds – 7.45am-8.45am
- Night Owls – 3.30pm-5.30pm
  - £5 per hour
  - Range of activities
- Breakfast or a snack included in the price
  - Familiar, friendly staff
- Universal Tax Credit and Tax Free Childcare Vouchers accepted
- Term time but local Nurseries offer school holidays



Luke 1:37 "For with GOD nothing shall be impossible"

#ASPIRE



# EYFS Areas of Learning

Area of Learning	Aspects		
Personal, Social and Emotional Development	Self-regulation	Managing Self	Building Relationships
Communication and Language	Listening, Attention and Understanding	Speaking	
Physical Development	Gross Motor Skills	Fine Motor Skills	
Literacy	Comprehension	Word Reading	Writing
Mathematics	Number	Numerical Patterns	
Understanding the World	People, Culture and Communities	The Natural World	Past and Present
Expressive Arts and Design	Creating with Materials	Being Imaginative and Expressive	

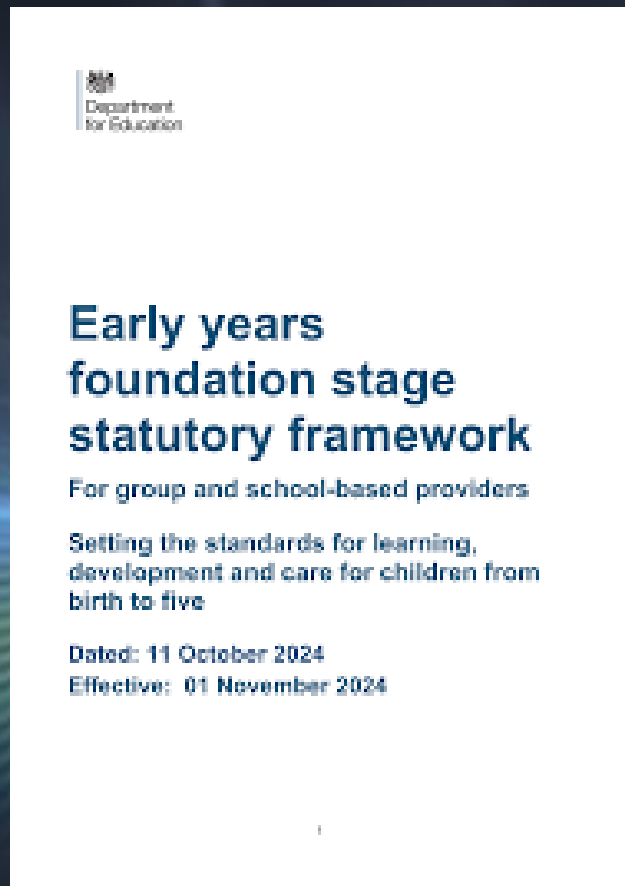


**Luke 1:37 "For with GOD nothing shall be impossible"**

**#ASPIRE**



# EYFS Guidance



At St Stephen's, our teaching and learning is led by the expectations in the Development Matters document. All areas of our curriculum feeds into the Year 1 expectations to ensure a firm foundation of learning across all areas of learning.

We closely follow all aspects of the EYFS Statutory Framework.

**Luke 1:37 "For with GOD nothing shall be impossible"**

**#ASPIRE**



# Reception Baseline Assessment

## What is the Reception Baseline Assessment?

The purpose of the 'baseline check' is to assess each child's level of development at the beginning of their formal schooling in order to measure progress.

## When is it completed and what is the focus of the assessment?

Compulsory assessment every child needs to complete

- Takes around 20-30 minutes
- Completed in the first 6 weeks of being in school
- Focuses on Communication and Language, Literacy and Maths
- Do not gather all our information from this assessment

# Timetable

- 3 carpet sessions in the day for Phonics, Maths and Topic
- - Continuous Provision in the indoor and outdoor provision
- Child-led play where the adults extend their learning through questioning
  - - Lots of physical activity including Playdough Disco and Scribble While you Wiggle
- Class assemblies moving to 2 x a week whole school Collective Worship in the Summer term.

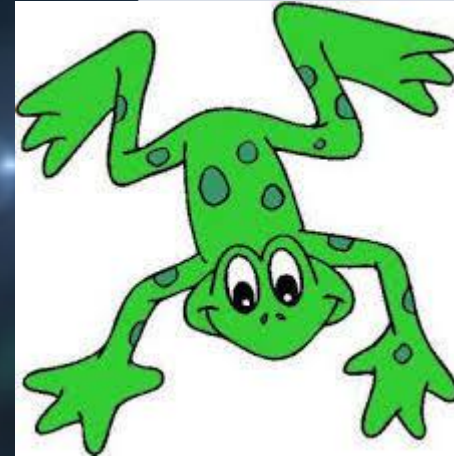


Luke 1:37 "For with GOD nothing shall be impossible"

#ASPIRE

# Reading at St Stephen's

- Daily teaching of Phonics
- Children are assessed every half term
  - Phonics Workshops
- QR codes sent home and flashcards
- Oxford Owl and Reading Eggs log-ins
- Reading expectation of 20 minutes a day ('20 is plenty'), this includes you reading to your child, Oxford Owl, Reading Eggs, singing nursery rhymes then incorporating your child reading to you
  - Reading Areas in every classroom
  - Weekly class library sessions
  - Book Fairs



**Luke 1:37 "For with GOD nothing shall be impossible"**

**#ASPIRE**



# Observations

- A picture of what the child is doing can be taken and the practitioner will write a dialogue of what the child was doing and saying
- This information will be stored on your child's learning journal, which you will receive at the end of the school year
- You can access your child's learning through the app. **Please download the app once you have been sent your log-in details**
  - Tapestry is only used for observations





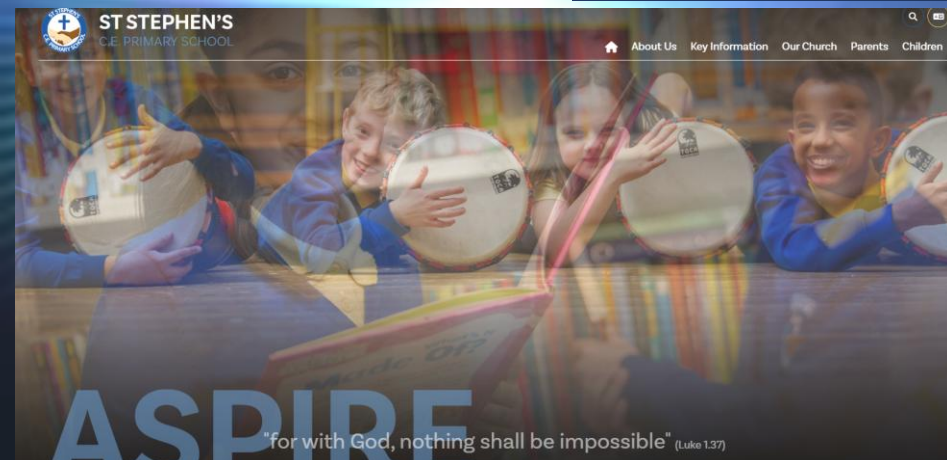
# Snack Time



- The children always have fresh fruit, milk and water available daily
- Children can bring their own snack if they wish
- Snacks brought from home need to be fresh fruit only
- Water bottles can be brought into school for your child to access their own water throughout the day. The bottles must only contain water
- Grapes **must** be cut up length ways

# How do I know what is going on?

- Weekly school newsletters
  - Emails
  - Text messages
  - Letters
  - Instagram
- School Website
- Class page



**Luke 1:37 "For with GOD nothing shall be impossible"**

**#ASPIRE**



# What do I do if I have a problem?

- Speak to the class teacher or member of staff as soon as possible
- If you cannot speak to your class teacher, contact the office and leave a message for them to ring you back
- If you are unhappy with the actions from the class teacher, speak to the Phase Leader then Deputy Headteacher then Headteacher

# Transition Day

- Visit classroom and their class teacher on **Thursday 3rd July**
  - Children will be dropped off in their classrooms via the school playground
- Parents/Carers can come into the classroom to settle your child
- Children will be left for the session to meet their new teachers and their friends

Group A – 9.30am-10.45am (9.20am main gates will open)

Group B – 1pm-2.45pm (12.50pm main gates will open)

Please stay at the top playground



# Meet the Teacher

- Our Meet the Teacher appointments will take place on Tuesday 3rd September, Wednesday 4th September and Thursday 5th September
- You will be asked to wait for your appointment at the front of the school
  - Your child must attend
  - You will talk to Mrs Hadfield whilst your child completes some activities with Miss Cowley
- Appointments will only last 25 minutes so please bring any questions or useful information with you for your meeting
  - Bring any copies of paperwork from outside agencies





# All About Me Boards

- A3 board about themselves
- Your child can choose to draw parts or collage using pictures of their loved ones and interests
- They will need to return their boards to school during their 'Meet the Teacher' meeting
- Your child will use their boards to introduce themselves to their friends
- They will then be placed on their 'Special Square' in the classroom for everyone to see

# Starting School in September

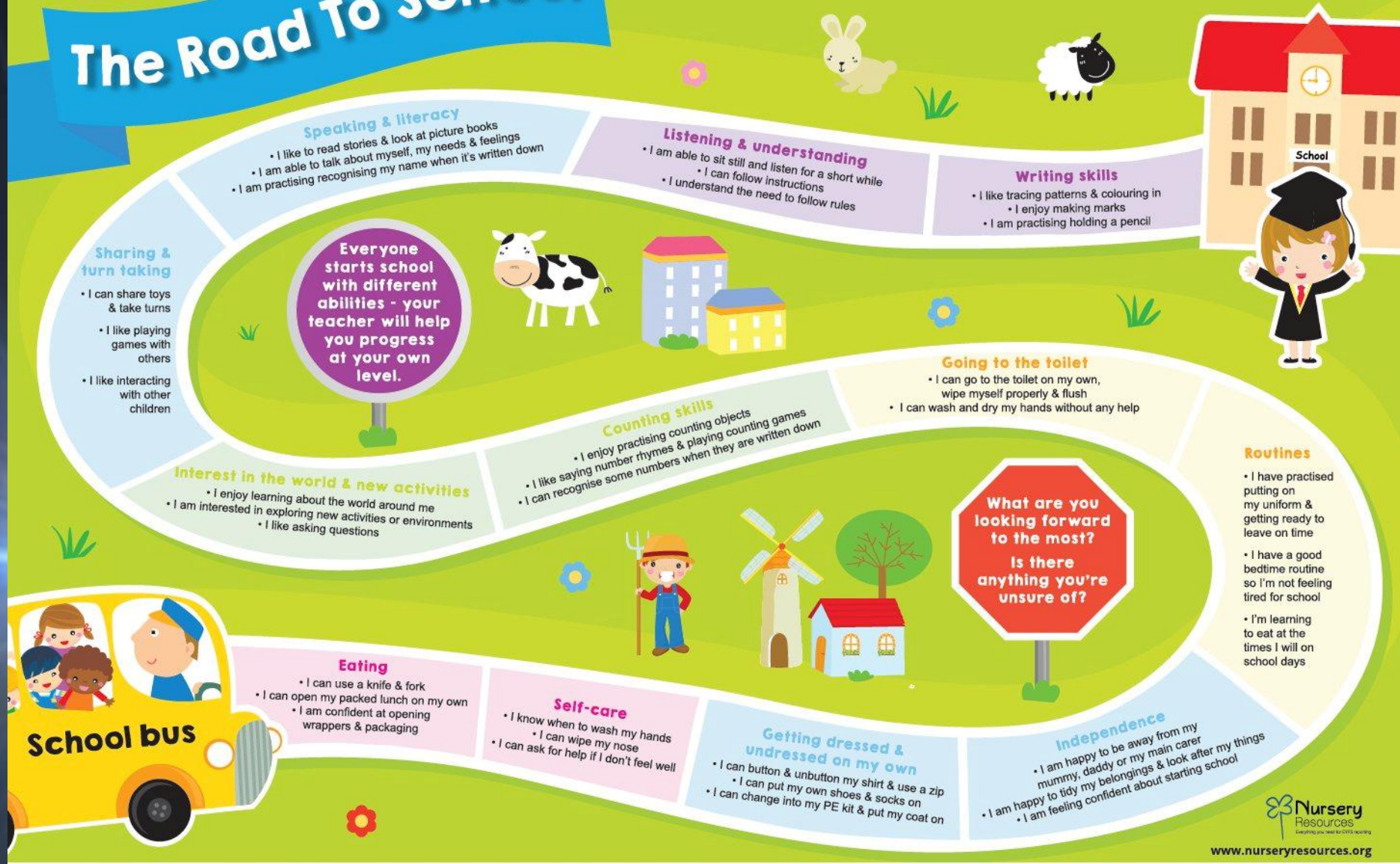
- Meet the Teacher appointments Tuesday 2<sup>nd</sup>, Wednesday 3<sup>rd</sup> and Thursday 4<sup>th</sup>. **Please write your appointment down**
  - **Friday 5<sup>th</sup> – Tuesday 9<sup>th</sup> September half days**

Group A	Friday 5 <sup>th</sup> September 8.45am-11am Monday 8 <sup>th</sup> September 8.45am-11am <u>Tuesday 9<sup>th</sup> September 8.45am-12.45pm</u>
Group B	Friday 5 <sup>th</sup> September 1pm-3pm <u>Monday 8<sup>th</sup> September 11.15am-3pm</u> Tuesday 9 <sup>th</sup> September 1pm-3pm



# The Road To School

This tracker helps you and your child prepare for school.



Remember - learning is not a competition; children learn at different rates. For more ideas to help prepare your child for school, talk to your childcare practitioner.

Luke 1:37 "For with GOD nothing shall be impossible"

#ASPIRE





**Thank you for coming!**  
**Any questions?**

**Luke 1:37 "For with GOD nothing shall be impossible"**

**#ASPIRE**

