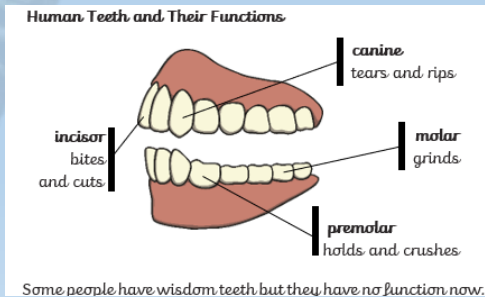


Key Knowledge

The Digestive System: The smell of food triggers saliva to be produced. The digestive system begins with the mouth and teeth where food is ingested and chewed. Saliva is mixed with the food which helps to break it up. When the food is small enough to be swallowed, it is pushed down the oesophagus by muscles to the stomach. In the stomach, food is mixed further.

The mixed food is then sent to the small intestine which absorbs nutrients from the food. Any leftover broken down food then moves on to the large intestine. The food minus the nutrients arrives in the rectum where muscles turn it into faeces. It is stored here until it is pushed out by the anus - this is called excretion.

Food chains show how energy from the sun is used by animals in a chain from plants through to animals and even humans. All food chains start with a producer which is always a green plant that converts the sun's energy into food. Animals then eat the producer and are called consumers.

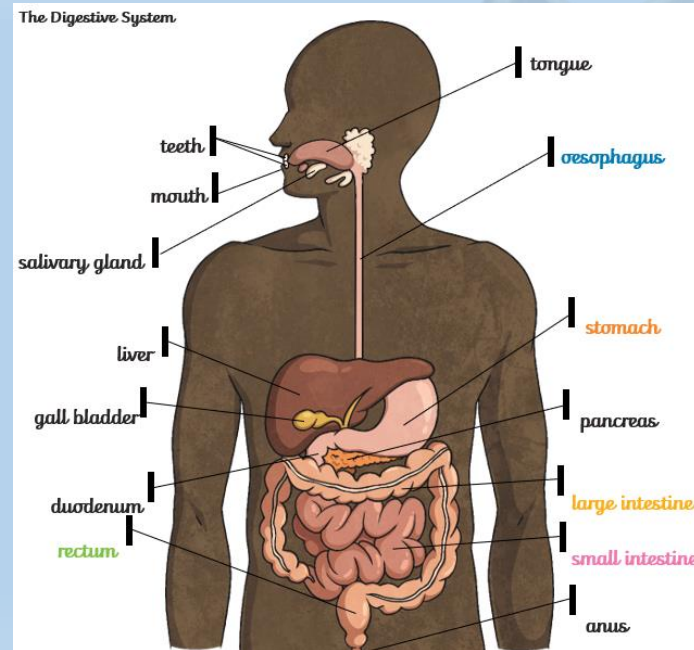


What I will learn

Describe the function of the human digestive system, explaining what the different parts do.

Identify the different types of teeth in humans and their functions.

Construct and read a variety of food chains, identifying producers, predators and prey.



Key Vocabulary

digest	Break down food so it can be used by the body.
oesophagus	A muscular tube which moves food from the mouth to the stomach.
stomach	An organ in the digestive system where food is broken down with stomach acid and by being churned around.
small intestine	Part of the intestine where nutrients are absorbed into the body.
large intestine	Part of the intestine where water is absorbed from remaining waste food. Faeces are formed in the large intestine.
rectum	Part of the digestive system where faeces are stored before leaving the body through the anus.
herbivore	An animal that eats plants.
carnivore	An animal that feeds on other animals.
omnivore	An animal that eats plants and animals.
producer	An organism, such as a plant, that produces its own food.
predator	An animal that hunts and eats other animals.
prey	An animal that gets hunted and eaten by another animal.